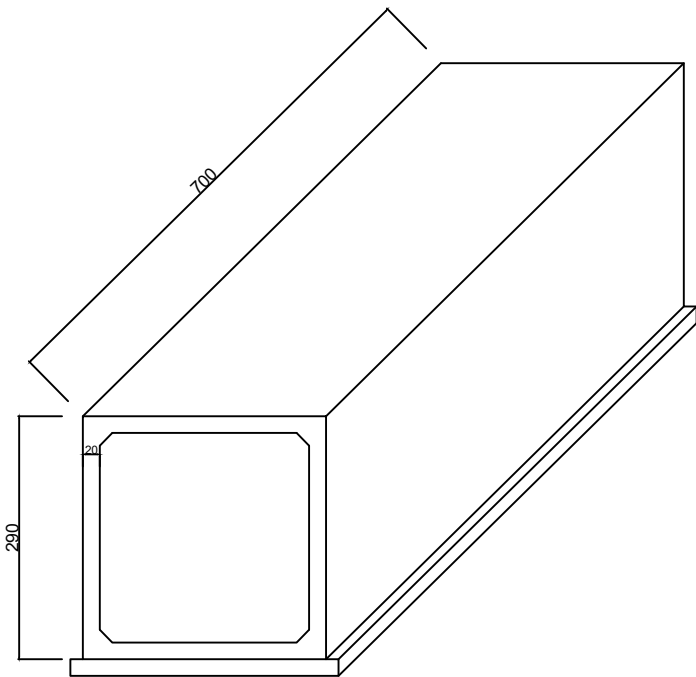
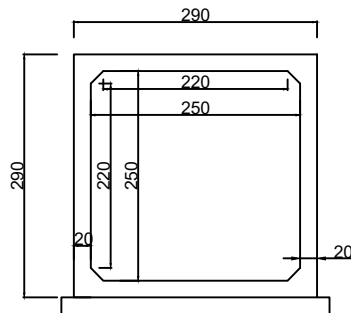


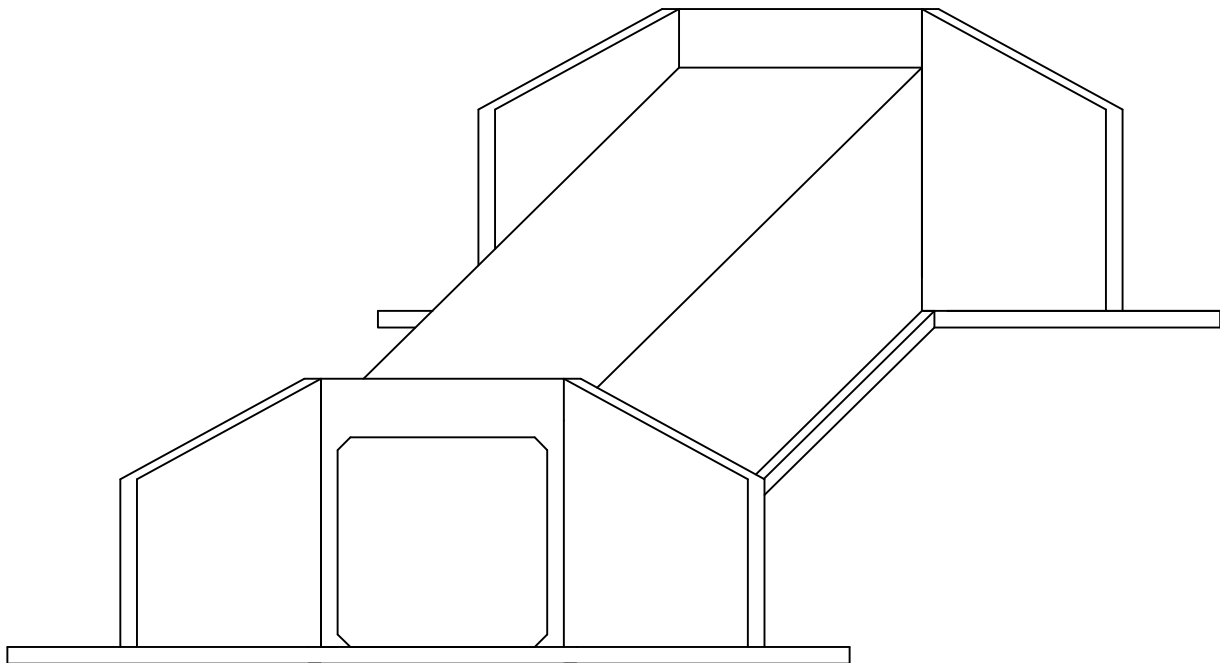
DETALHE  
ADUELA



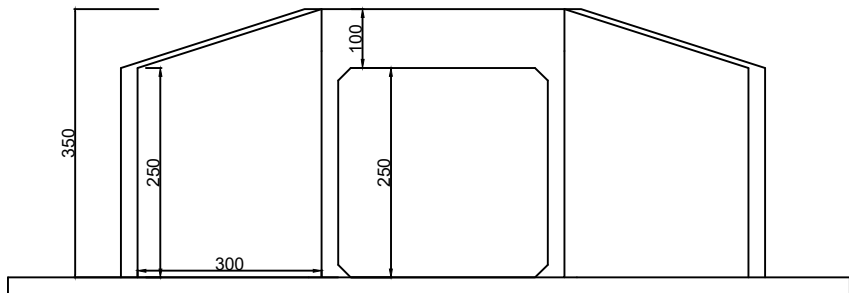
DETALHE  
ADUELA



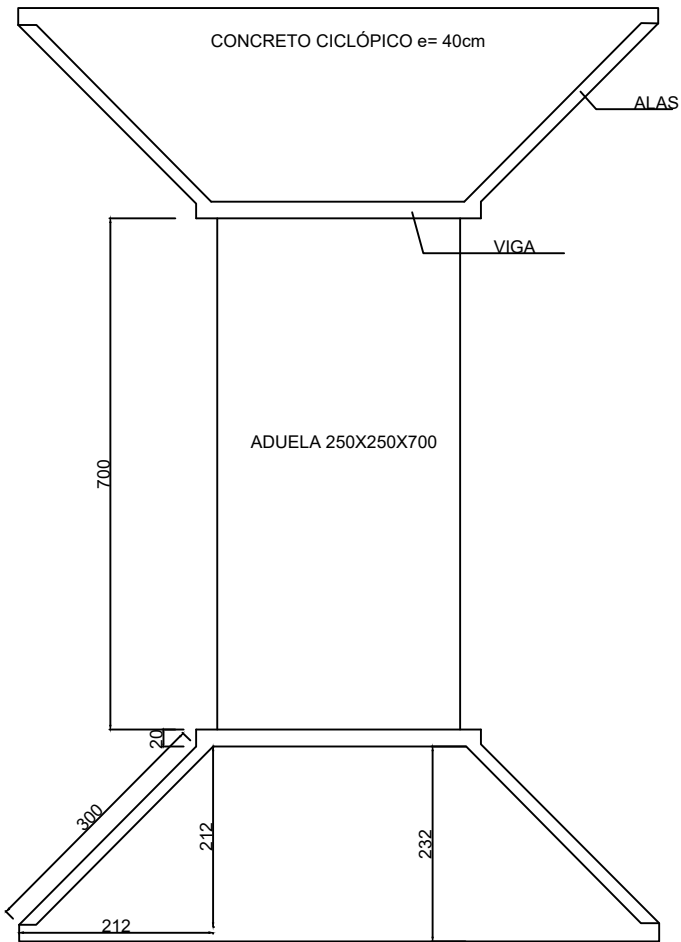
DETALHE



DETALHE  
"CABECEIRA"



PLANTA



PREFEITURA DE CHAPADA DOS GUIMARÃES		
SECRETARIA MUNICIPAL DE INFRAESTRUTURA		
ASSUNTO: BUEIRO SIMPLES CELULAR DE CONCRETO 250X250 cm		
OBRA: SUBSTITUIÇÃO DE PONTE POR ADUELAS		
LOCAL: CÓRREGO TAQUARALZINHO		
AUTOR DO PROJETO: _____		
ENG. DAYNA APARECIDA DA SILVA - CREA - MT 49.331		
COORDENADAS: 14°51'15.74"S 55°53'24.82"W	DATA: AGOSTO/2021	
	ESCALA: S/E	
DIMENSÕES: 250X250X700 cm	VISTO:	FOLHA:
DESCRIÇÃO: LAYOUT		03/04